

SUITE C: ±20,701 SF

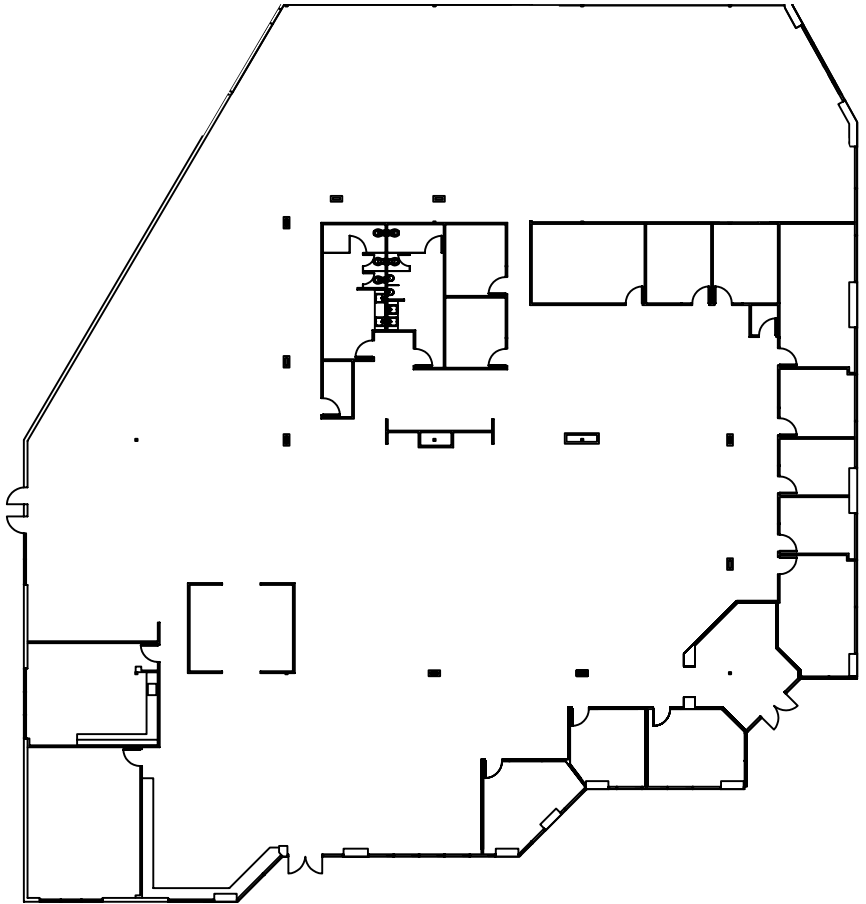
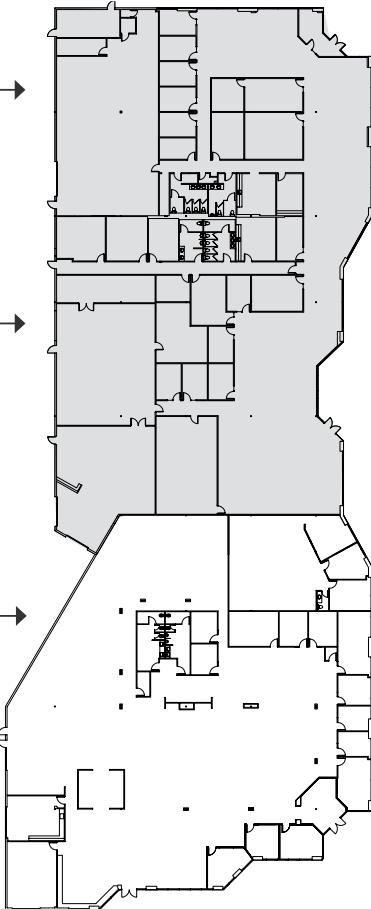
Plans not to scale

SITE PLAN

LEASED →
SUITE A
±10,516 SF

LEASED →
SUITE B
±14,704 SF

AVAILABLE →
SUITE C
±20,701 SF



LEASING INFORMATION

Bob Maderious
Senior Vice President
925.357.2010
bob.maderious@transwestern.com
LIC 00616136

Thomas Caple
Vice President
925.357.2018
tom.caple@transwestern.com
LIC 01089011



500 Ygnacio Valley Road, Ste. 100
Walnut Creek, CA 94596

CA BROKERAGE LIC 01263636
T 925.357.2000 F 925.357.2001

www.transwestern.com/walnutcreek