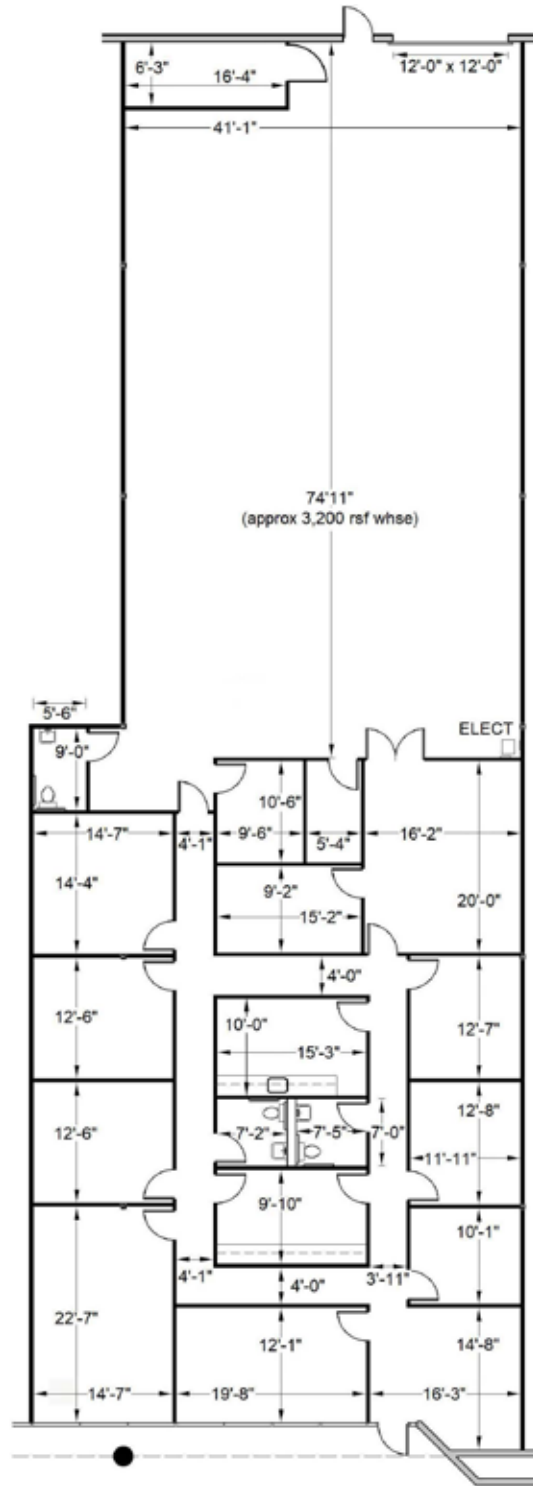


SUITE C: ±6,902 SF

Plans not to scale



LEASING INFORMATION

**Bob Maderious**  
Senior Vice President  
925.357.2010  
bob.maderious@transwestern.com  
LIC 00616136

2175 N. California Blvd., Suite 415  
Walnut Creek, CA 94596  
CA BROKERAGE LIC 01263636  
T 925.357.2000 F 925.357.2001  
www.transwestern.com

